

WRAGBY TOWN HALL MANAGEMENT COMMITTEE

Proposal to improve childrens play area



The demographic of Wragby has changed over recent years with a larger younger population.

With this in mind and following several requests from the Community The Town Hall Management Committee have been looking at making improvements to the children's play area.

The proposals has the full support from Wragby Parish Council.

We have engaged with a number of play area manufacturers to improve the existing facility.

We now need your views on the proposal.

On the following pages are three different proposals together with an indicative cost for each.

The improvements come at a significant cost and it is hoped to secure significant grants to fund the project.

Each proposal provides for installation of a MUGA (Multi Use Games Area) - this will be used for tennis, all weather football and basket ball.

We now need your thoughts so please complete the attached questionnaire and return by one of the following methods:-



By post to:

Wragby Play Area
28 Allington Drive
Grimsby
DN37 9FF

Scan and email to

wragbyplayarea@gmail.com

Photo and WhatsApp to

0771 307 5682

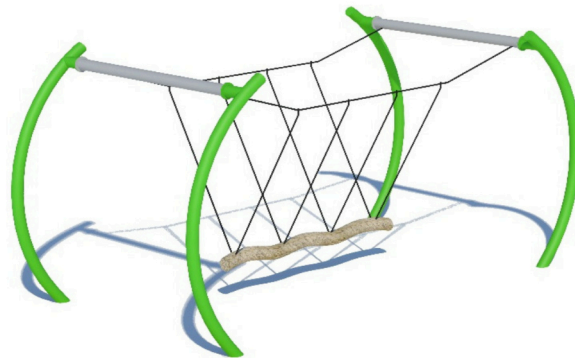
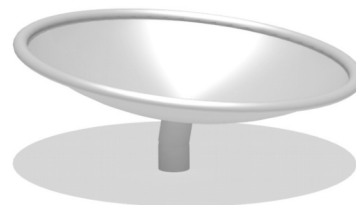
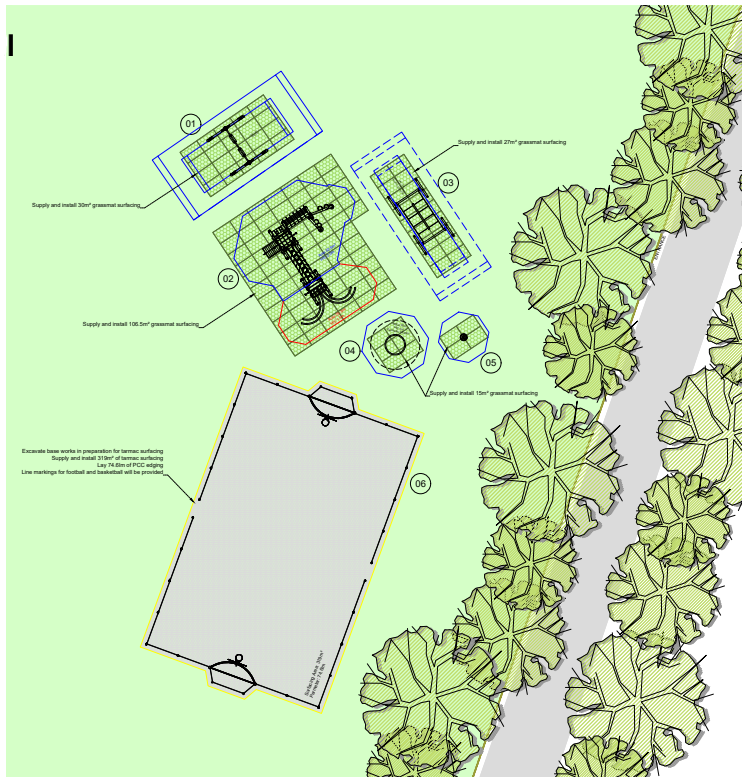
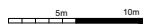
Or complete the questionnaire online at: <https://s.surveypalnet.com/6s44fd6p> or follow the link on our website: <https://wragby.parrish.lincolnshire.gov.uk>

Quote No. 5002285
 Dwn SS Scale 1:200@A3 30.03.22
 Do not scale from this drawing

- Grass
- Tarmac/ Concrete
- Grass Mat
- Edging



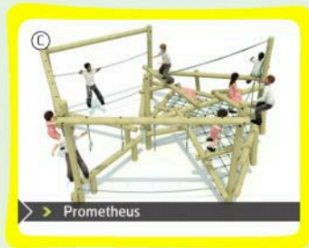
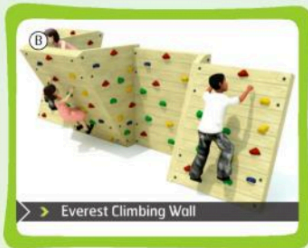
No.	Code	Description
01	OSB082	2.4m High Swing with 2no. Bumper Seats
02	OTW101	Mammuth Multi-Play Unit
03	COB001	Cobra Group Swing
04	SWD500	Large Dish Roundabout
05	SWD720	Hula Rotator
06	SZU010	Standard Ball Court 13.6m x 21.4m



Option 1

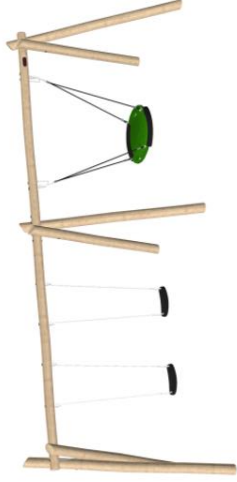


- Equipment:**
- (A) 2.4m Log Swing with Basket Seat
 - (B) Everest Climbing Wall
 - (L) Prometheus
 - (D) 72m of 656 Metal Muga Fencing @3m High w/ 2x Chicane Entries
- Surfacing:**
- (A) 17x Grassguard
 - (B) 29x Grassguard
 - (C) 55x Grassguard
 - (D) 288sqm of Grass Green Needle-punch Surfacing w/ White 5-a-Side Markings (Inc Groundworks & Edging)



Option 2

Option 3



Combi Swings
2 x flat seats
1 x group shell seat



Springers



Toddler Wizards Hideaway



Rickety Bridge & Balance Waterlilies



Supernova



Six Sided Climbing Structure



4 Person See-Saw